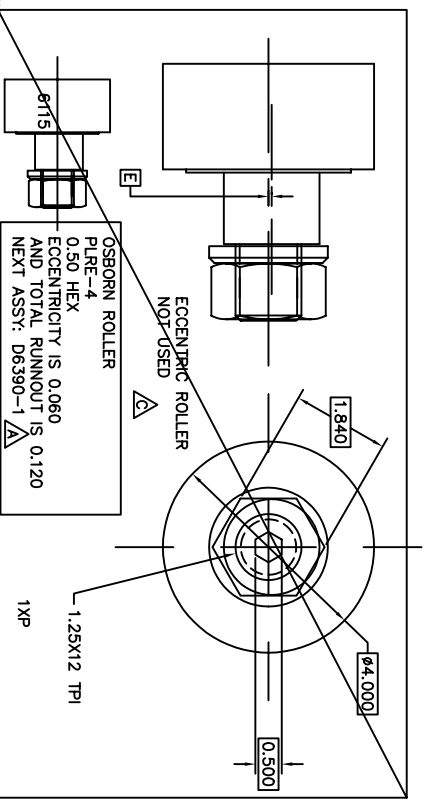
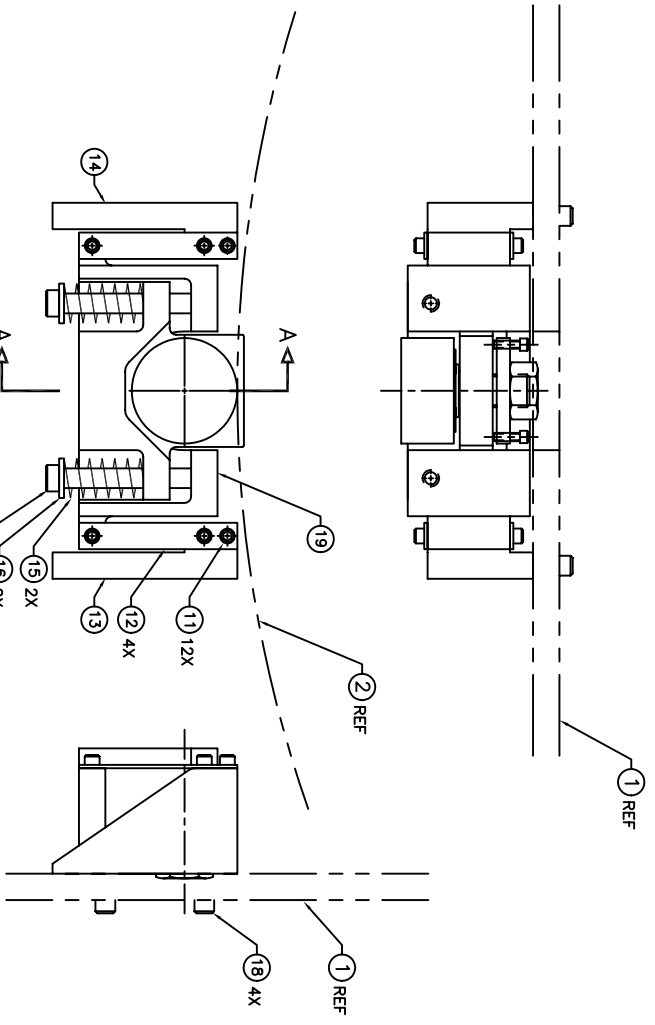


INCHES
Xref: titiashock.dwg

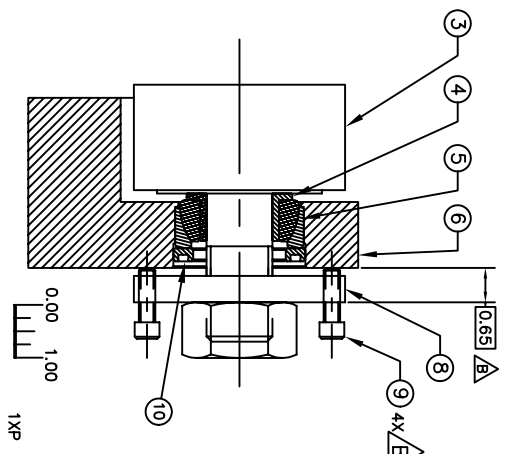


2 RECD
0.5XP
NEXT ASSEMBLY: D6390-1
ROLLER WEIGHT: 8.6 #

-1 SMALL ROLLER ASSEMBLY



SECTION A-A



D6117-1	18	1	MOUNT	STEEL
-	19	4	1/2" OD SCREW	S.S.
-	20	2	3/4" FLAT WASHER	S.S.
D6117-2	16	2	1/2" FLAT WASHER	S.S.
D6117-3	15	5	LEE SPRING	STEEL
D6117-4	14	1	L.H. BRACKET	STEEL
D6117-5	13	1	R.H. BRACKET	STEEL
D6117-6	12	1	YANDEX SPRING	STEEL
D6117-7	11	1	RETAINER RING	BRASS
D6117-8	10	4	1/8" DIA. CAP SCREW	STEEL
D6117-9	9	4	1/8" DIA. CAP SCREW	STEEL
D6117-10	8	1	TILT PLATE	STEEL
D6117-11	7	1	BEARING	STEEL
D6117-12	6	1	SCF SPACER BEARING	STEEL
D6117-13	5	1	SLEEVE	STEEL
D6117-14	4	1	OSBORN ROLLER	STEEL
D6117-15	3	1	REF DRIVE DISK	STEEL
D6117-16	2	1	REF COMMAND ASSEMBLY	STEEL

NA

KECK/DEIMOS

SMALL ROLLER ASSEMBLY

D6115.C

27/04/98
EJ

27/04/98
EJ

ADD ECCENTRIC ROLLER DIMENSIONS
6/21/94 SCREW WERE 8/1-20 SIMILAR
OBSOLETE ECCENTRIC ROLLER. ADD NOTES

A 6.118 L.O.
B 6.178 L.O.
C 17/28 L.W.R.